

BORWA SOUTH

**INDUSTRIAL & MINING
EQUIPMENT**

**PRODUCT
BROCHURE
2023**

Founded in 2020, Borwa South Consulting (Pty) LTD, Trading as Borwa South Industrial and Mining is 100% Black Empowered Company.

We are a distributor of strata control technologies, equipment and consumables, drilling consumables, mining and industrial equipment.

We also provide strata control and horizontal drilling services in underground support, dyke development, highwall support, shotcreting and horizontal drilling.

We supply various other industrial equipment including water reticulation valves, transformers, magnets, welding machines, lights, sirens, equipment parts design and fabrication. These products are all ISO9001:2015 certified equipment and consumables in collaboration with wide range of Original Equipment Manufacturers (OEM's) and Service Providers.

BORWA SOUTH
INDUSTRIAL & MINING
EQUIPMENT



Stressing Equipment



Lightweight 25ton Jack

- Suitable for tensioning 15mm and 18mm cable anchors
- Front gripping (minimum strand length for gripping 100mm)
- Easy to change gripping wedges/jaws
- Powered by double acting hydraulic pump
- Weight is only 15kg's

25ton Stressing Jack

- Stressing Jacks are used to tension cable anchors
- Suitable for tensioning 13mm, 15mm & 18mm cable anchors
- Rear gripping (minimum strand length for gripping 500mm)
- Easy to change gripping wedges/ jaws
- Powered by double acting hydraulic pump
- Weight: 18kg's



Hydraulic Stressing Pump

- Single acting hydraulic pump (2-way valve)
- Maximum output pressure - 10 000psi/690 Bar
- Hand operated
- Large reservoir
- Compatible with most single acting hydraulic cylinders
- Weight: 8.15kg's



Hydraulic Stressing Pump

- Heavy duty double acting hydraulic pump (4-way valve)
- Maximum output pressure - 10 000psi/690 Bar.
- Hand operated
- Large reservoir
- High volume per stroke
- Rugged construction
- Compatible with most double acting hydraulic cylinders
- Weight: 14.70kg'



Air Hydraulic Stressing Pump

- Double acting hydraulic pump (4-way valve)
- Maximum output pressure - 10 000psi/690 Bar
- Air intensified (operates with compressed air)
- Ergonomic design for minimum operator effort
- Large reservoir
- Compatible with most double acting hydraulic cylinders
- Weight: 21.5kg's



Strand Cropper

- Strand Cropper, can cut 13mm, 15mm and 18mm anchor strand
- Max pressure - 60 MPA/600 Bar
- Design cutting force - 290KN
- Weight: 12kg's



Complete Pull Tester

- Single acting pull tester
- Max pulling capacity - 20 ton
- Max pressure - 55 MPA / 550 Bar
- Weight: 11.6kg's

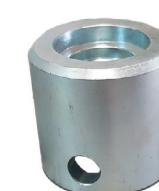
Nose Cones



PLV
NOSE CONE



DTI
NOSE CONE



DTI NOSE
CONE



PLV
NOSE CONE

Mining Consumables

Hydraulic Hoses & Fittings, Mining, Hoses & Fittings, Drill Rods, Couplers & Drill Bits, Exploration, Drill Rods, Coring Bits, Core Lifters, Safety Slings, Lubricators (Steel) , Oils & Lubricants, Splitset Dollies, Roofbolt Spanners, Spin Adaptors, & Resin.



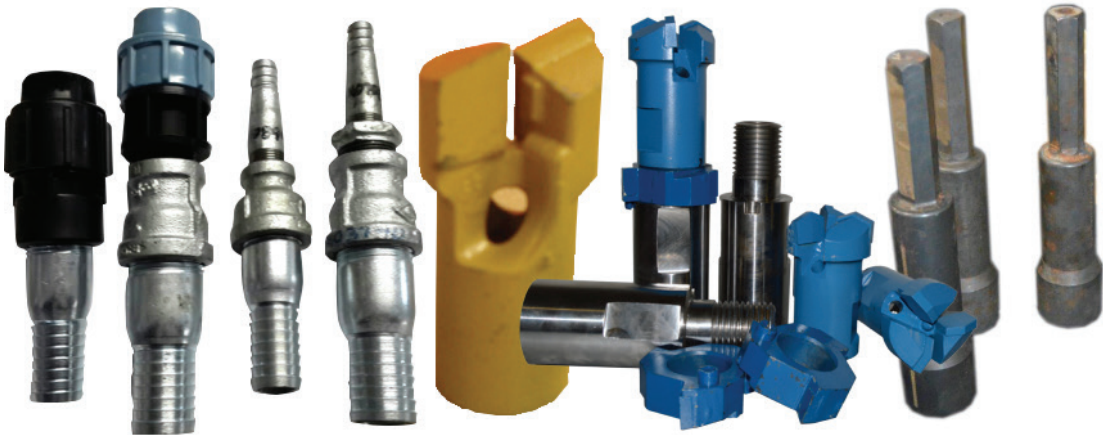
WATER SWIVELS,
DRILL RODS, CORE DRILLING
DRILL BITS, REAMING SHELL ADAPTORS



Left to right:
Slotted Spinning Adaptor; Roofbolt Adaptor;
Spinning Adaptors; BT Pin Hex Adaptor



HOSES



WATER SWIVELS, DRILL RODS, CORE DRILLING DRILL BITS, REAMING
SHELL ADAPTORS

Grout Equipment



HAND PUMP GROUT
MIXER



PUMPABLE GROUT
10/20/25KG BAGS



GROUT DETECTOR



AIR GROUT MIXER & PUMP

OTHER PRODUCTS

Roofbolts, Splitsets,
Thin Spray Liners (TSL),
SL Equipment

Contact us to find out more
about the products available!

Anchors & Related Strata Control Products

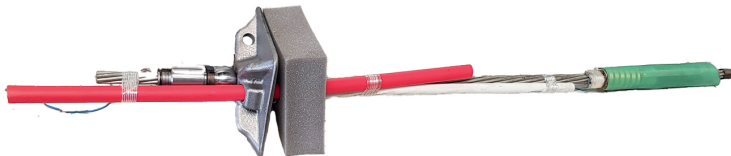
SPIN ANCHORS

SPIN ANCHORS are primarily used as secondary support in soft rock mines, especially coal mines. The anchors are usually point anchored with quick setting resin and are bulbed. Dependent on the Rock Engineer's requirements, they may also be grouted.



MECHANICAL TRUSSES

Mechanical trusses are generally used for supporting slips, faults, bullnoses, large roof spans, friable roof conditions (used in conjunction with mesh and straps), pillar wrapping support. Trusses are made to the client's required length.



Magnets



LIFTING MAGNET

Lift, move or position regardless of size, weight or shape, in fewer hours, reliably and economically. Lifting magnets make quick work of difficult, time-consuming steel handling.

Our product range includes lifting magnets, both repair and new on request.

Sirens & Lights



A105N RED SIREN



BANSHEE EX 26S RED SIREN



Banshee Flashtone
Excel Light



Banshee Ex Vehicle
Light S3

Valves



RF MANUAL
PINCH VALVE



PNEUMATIC
PINCH VALVE



ATVAL K & KE
PINCH VALVE



KNIFE GATE
VALVE



SKG LARGE
BORE



Atval Pinch
Valve Sleeve



KB TYPE
DIAPHRAGM
VALVE

BORWA SOUTH
INDUSTRIAL & MINING
EQUIPMENT



Shotcreting

Application of shotcrete and fibrecrete to highwalls and underground

Dyke Development

Drill and blasting services for underground dyke development

Underground Support

Installation of in bye and back bye secondary support including installation of welded mesh, roofbolts, cable anchors, trusses and pillar wrapping

Horizontal Drilling

Effective support of the exposed highwalls is crucial for the protection of employees, infrastructure & equipment.

Highwall Support

Effective support of the exposed highwalls is crucial for the protection of employees, infrastructure & equipment.



Welding

iARC 200, 300 & 400

High powered, lightweight, portable, and easy to operate MMA inverter welders.

- Digital Displays
- MMA Arc Control
- Tig Function Menu
- Closed-loop current monitoring
- Built-in voltage reduction safety
- High duty cycle (100% at maximum settings @ 40degrees celsius)



AQUA COOLER

Light weight featuring **twin core aluminium radiators** for better heat transfer capabilities and increased efficiency, a high pressure 3,2mm bar **pedrollo water pump**, **cuprafin copper tubing** which creates more turbulence in the water and **accurate water flow monitoring**.



Mobile Working Platforms

CMS produces a standard range of mobile working platforms, in addition we design and manufacture to client specification.

All platforms are certified by a professional engineer and are load tested to the design requirements.



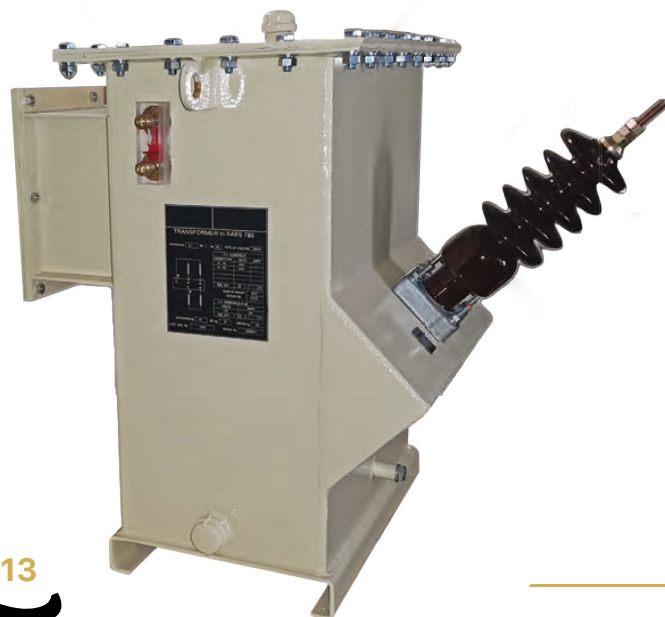


Transformers

DISTRIBUTION TRANSFORMERS WITH THE SANS 780 MARK

We design and manufacture distribution transformers up to 1.6MV according to SANS780 as well as transformers for Municipal & Mining mini-subs.

INPUT VOLTAGES: 3.3kVa, 6.6kVa, 11kWa, 15kWa, 22kWa, dual voltage 6.6 and 11kVa.



MINI-SUB STATIONS WITH OIL & SF6 RMU's

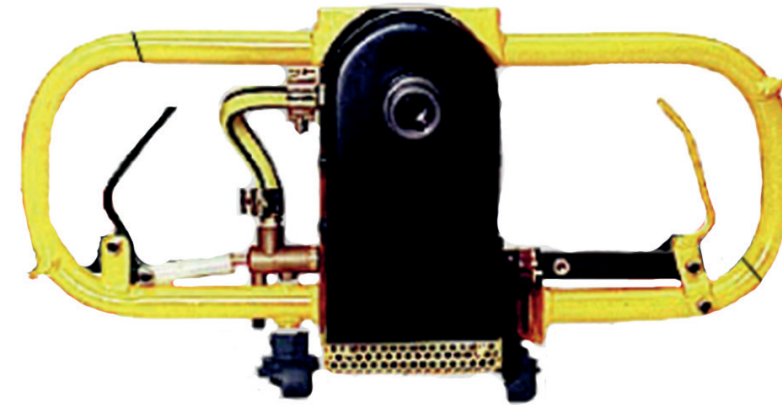
We design and manufacture many sub-stations up to 1000kVa according to SANS1029.

INPUT VOLTAGES: 3.3kVa, 6.6kVa, 11kWa, 15kWa, 22kWa, dual voltage 6.6 and 11kVa.

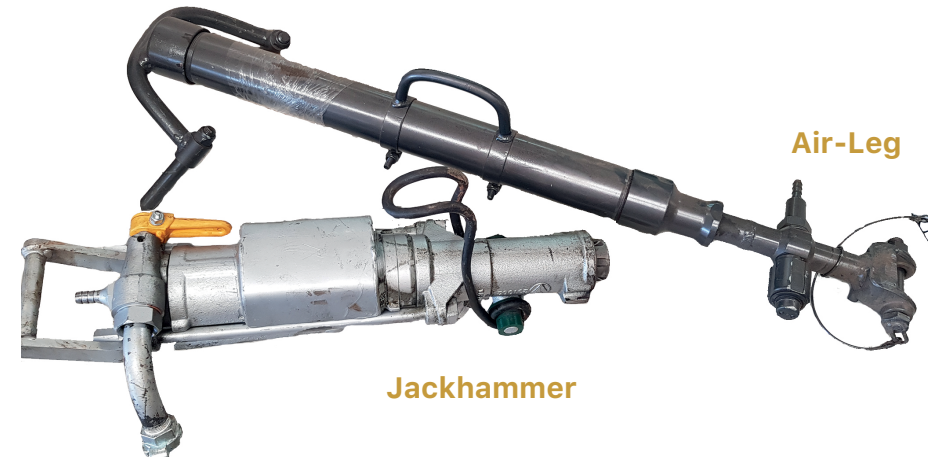


Portable Drilling Equipment

Gopher Portable Roofbolter, Bora Rock Drill, Cub Hand Held Borer & Equipment Training



Cub Hand Held Borer



Jackhammer

Air-Leg



Lubricator



SA Gopher



TRAINING

We offer a range of training programmes on our products - **Contact us to find out more!**

Roofbolters/Face Drills

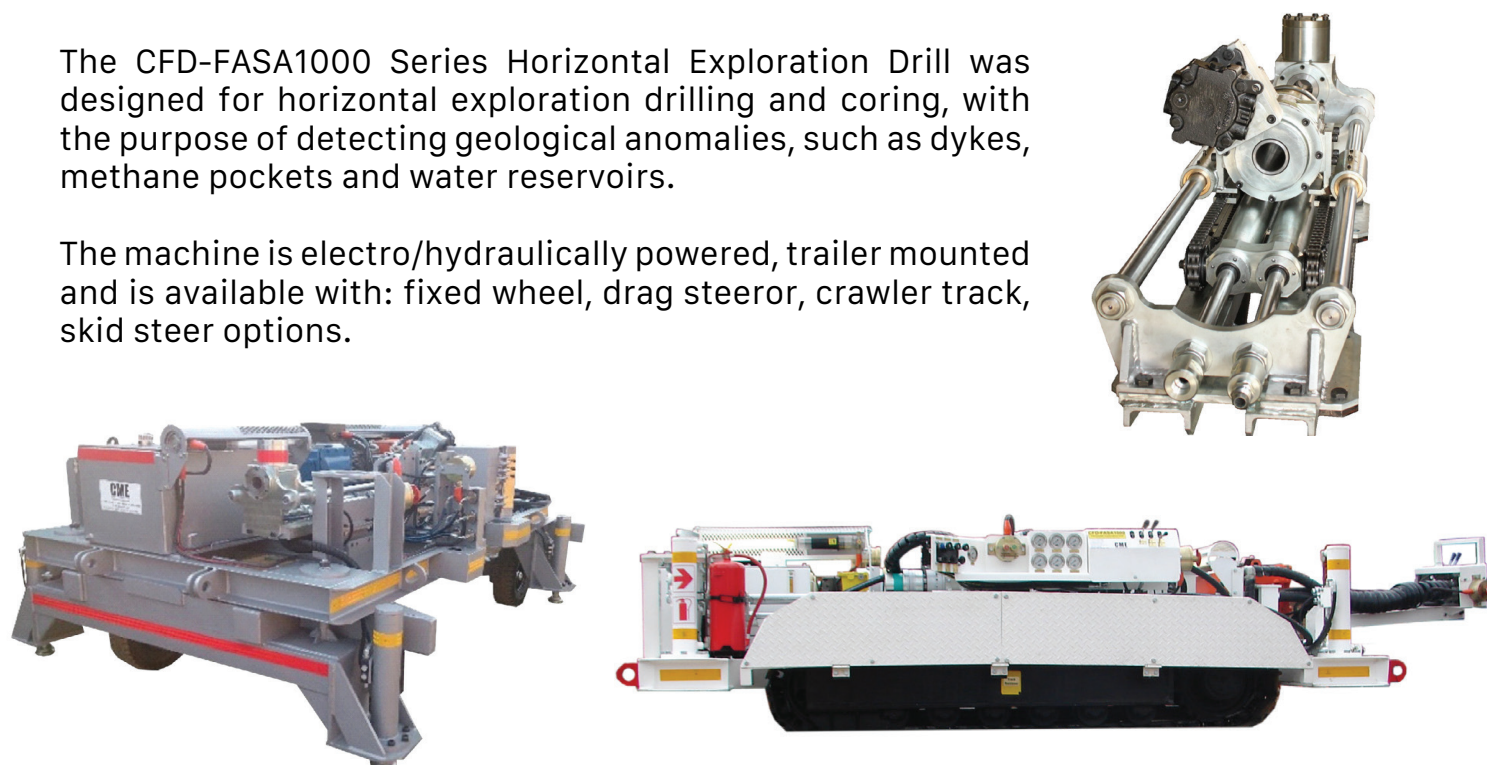
The CMR7 Mantis Roofbolster/Face Drill is a flameproof lectro/hydraulic crawler rig. dependent on which feedframe is fitted, the Mnatis can be used for rotary drilling & roofbolting for face drilling applications.



Horizontal Exploration Drills

The CFD-FASA1000 Series Horizontal Exploration Drill was designed for horizontal exploration drilling and coring, with the purpose of detecting geological anomalies, such as dykes, methane pockets and water reservoirs.

The machine is electro/hydraulically powered, trailer mounted and is available with: fixed wheel, drag steeror, crawler track, skid steer options.



Drilling

Vula Drilling (Pty) Ltd, markets and sells locally manufactured drilling consumable products. They are the Original Equipment Supplier (OES) of the proprietary "VULA" range of hard-rock drill bits, rods and knock off tools .



Contact us to find out more about the products available!

Address & Contact Details:

19 Arnheim Circle
Lonehill
South Africa

Email: info@borwasouth.co.za / thabo@borwasouth.co.za
Website: www.borwasouth.co.za

Registration Number: **2020/894021/07**
Vat Number: **4370307177**

